

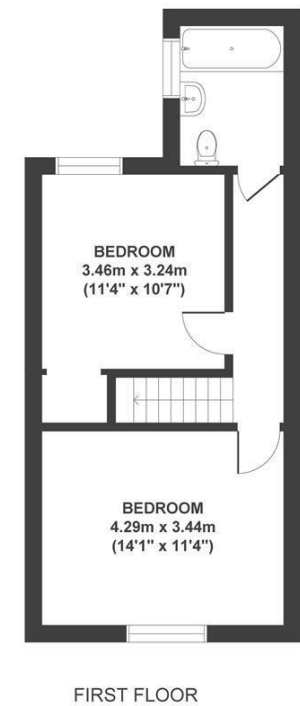
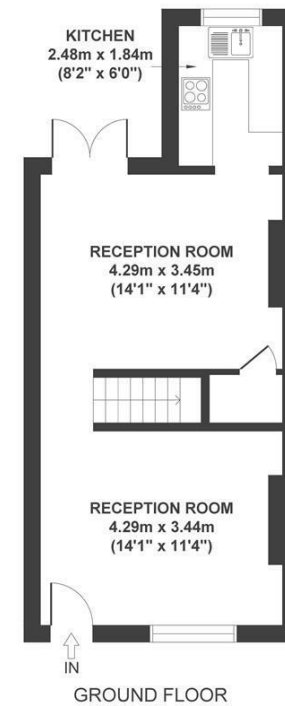
Boardwalk

Montgomery

, BRISTOL

Montgomery Street VICTORIA PARK

APPROXIMATE FLOOR AREA
74 SQM / 795 SQFT



~~Boardwalk~~

Montgomery

, BRISTOL

£

£425,000



BS3 4SE

zzz

2 Bedrooms



1 Bathrooms

"We've loved living in this happy home on the edge of Victoria Park. It's warm and cosy yet surprisingly spacious for a two-bedroom, set on a quiet, friendly street with the park right on the doorstep. We've enjoyed sunny morning coffees in the garden — especially when the cherry tree blooms — and winter evenings by the wood-burning fire. With great cafés nearby and a strong sense of community, we're only moving for work and will truly miss this special place."

